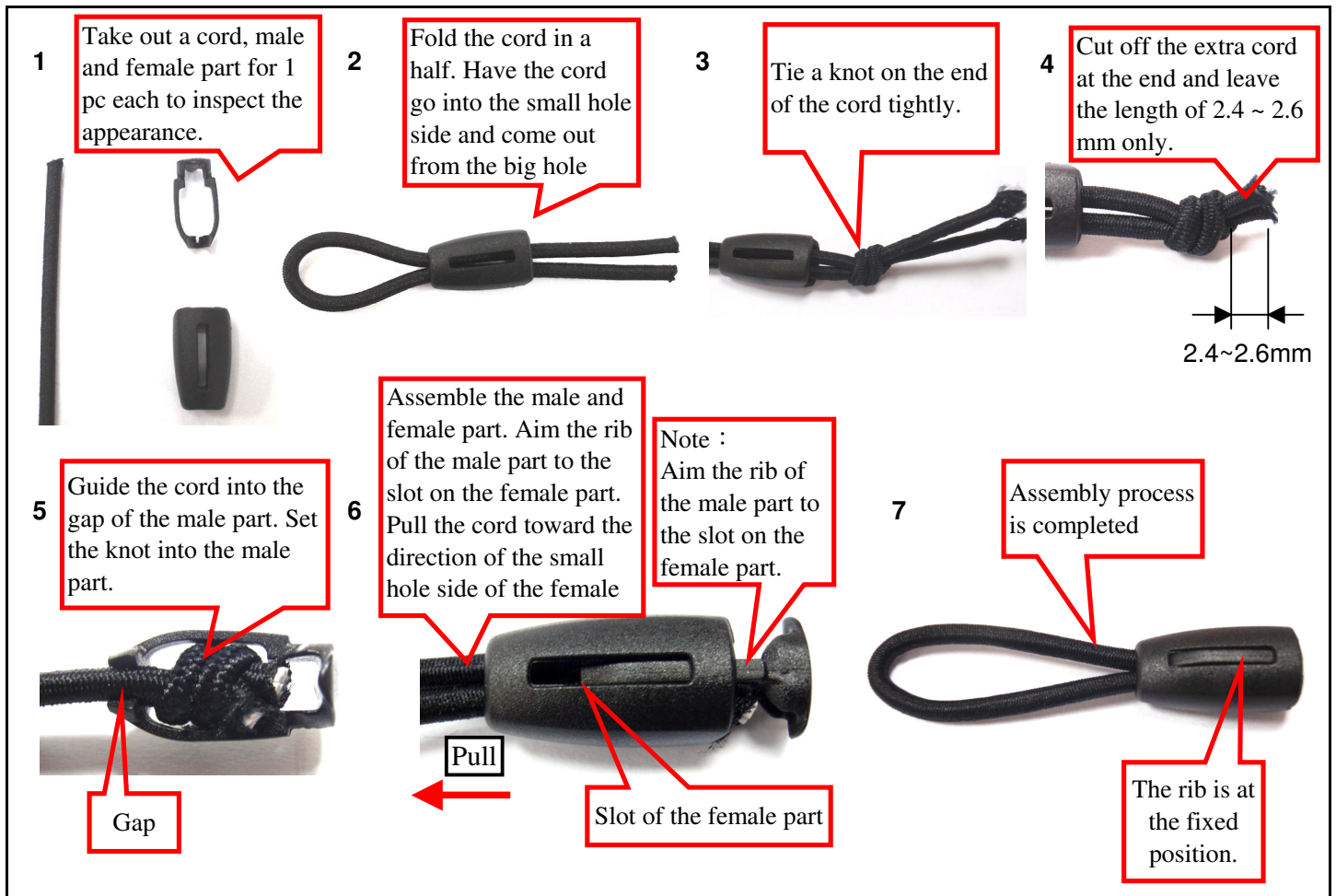


Product Type	Cord End	Item#	Recommended cord size	Cord type
		CSTL2A	$\psi 2.0 \sim \psi 2.5 \times 2$	Elastic cord



No	Steps	Instruction
1	Take out a cord, male and female part for 1 pc each to inspect the appearance.	No scratch, break and short shot to be found on the appearance.
2	Fold the cord in a half and have it go through the female part.	Have the cord go into the small hole side and come out from the big hole side of the female part.
3	After the cord going through the female part, tie a knot at the end of the cord.	Be sure to tighten the knot. (Can use long nose plier for assistance)
4	Cut off the extra end of the cord	Leave the end of the cord to be 2.4 ~ 2.6 mm only.
5	Put the knot into the male part (Guide the cord from the gap of the male part)	The knot needs to be completely set into the male part
6	Hold the female part with one hand, and hold the cord with the other hand. Pull the male part into the female part.	Pull the cord until the male and female parts are completely locked. * Note: The rib of the male part has to be aimed to the slot on the female part while assembling.
7	Assembly process is completed	The cord can't be removed after assembly. The ribs of the male part have to be at the fixed position.